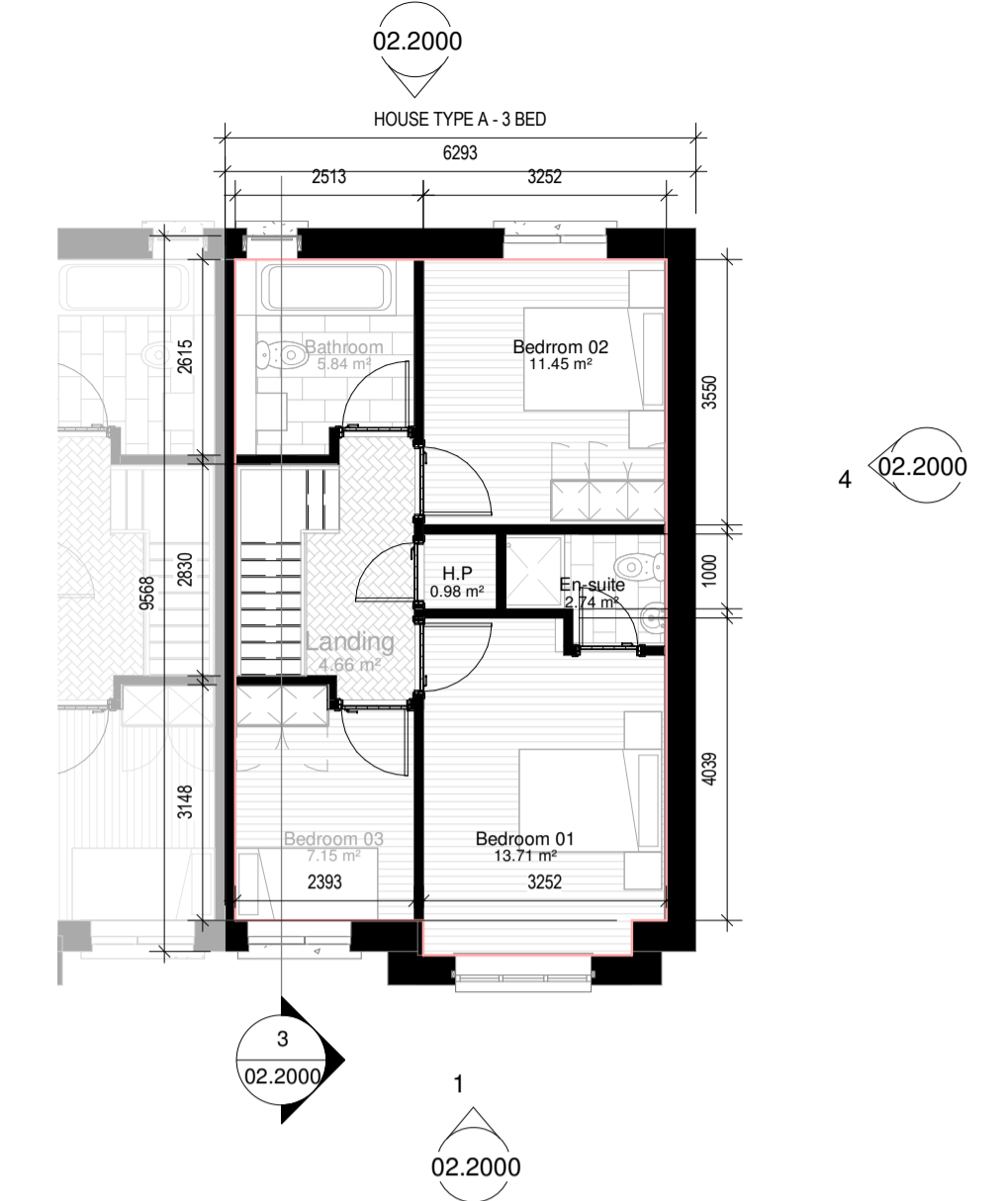
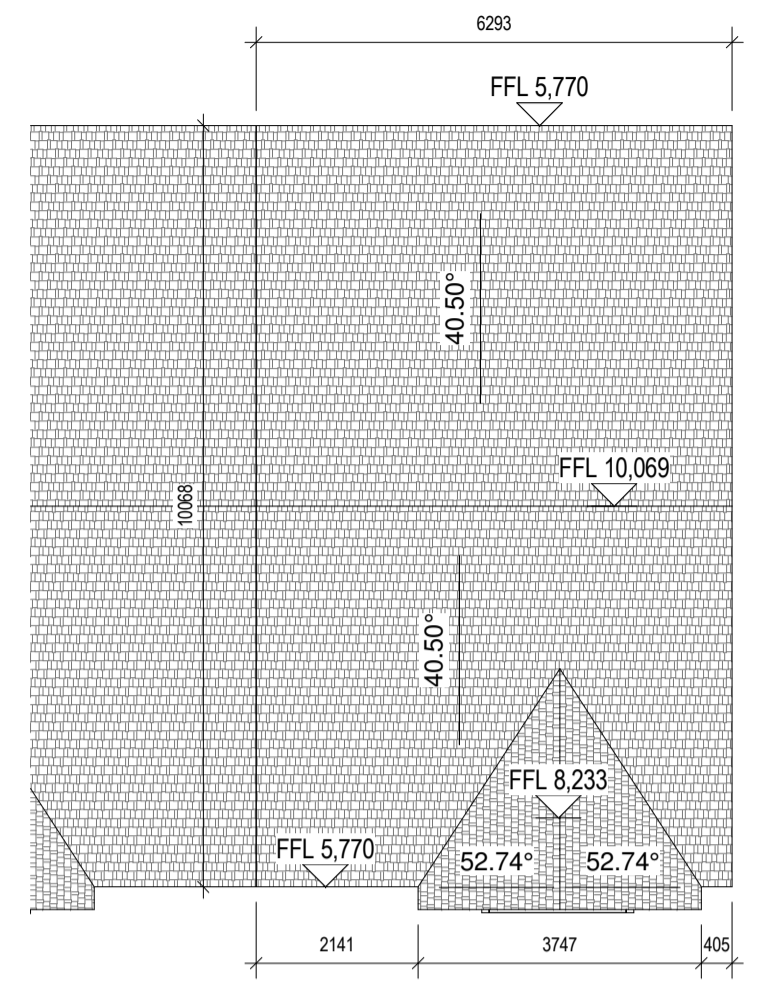


L00 3Beds\_GA Floor Plans\_L00  
1: 100



L01 3Beds\_GA Floor Plans\_L01  
1: 100



5 RIDGE LINE  
1: 100

3Beds House	
Name	Area
3Beds-L00	52.29 m <sup>2</sup>
3Beds-L01	52.22 m <sup>2</sup>
<b>Total</b>	<b>104.51 m<sup>2</sup></b>

ROOM SCHEDULE		
Level	Name	Area
00_FLOOR	Hall	7.50 m <sup>2</sup>
00_FLOOR	Kitchen / Dining	20.20 m <sup>2</sup>
00_FLOOR	Living	13.84 m <sup>2</sup>
00_FLOOR	Utility	3.78 m <sup>2</sup>
00_FLOOR	W.C.	2.60 m <sup>2</sup>
01_FIRST FLOOR	Bathroom	5.84 m <sup>2</sup>
01_FIRST FLOOR	Bedroom 01	13.71 m <sup>2</sup>
01_FIRST FLOOR	Bedroom 03	7.15 m <sup>2</sup>
01_FIRST FLOOR	Bedroom 02	11.45 m <sup>2</sup>
01_FIRST FLOOR	En-suite	2.74 m <sup>2</sup>
01_FIRST FLOOR	H.P.	0.98 m <sup>2</sup>
01_FIRST FLOOR	Landing	4.66 m <sup>2</sup>

**Walls**  
Selected clay bricks to varying colours as defined in the different character areas as indicated. Painted nap sand cement render, exposed plaster bands around external cupes / linets. Concrete or metal cills, linets or cappings as indicated on elevations.  
1 Facing Brick 1 - Red / Brown Blend with flush grey mortar  
2 Facing Brick 2 - Grey brick with recessed dark grey mortar  
3 Facing Brick 3 - Light Buff brick with recessed grey mortar  
4 Random rubble stone cladding  
5 Sand / cement nap finish to external leaf of blockwork, paint then applied.

**Windows**  
6 Windows to be aluminum double glazed windows. External doors to be high security impact resistant timber hall doors to EN 1522 and level access threshold to approved colour. Obscure windows to bathrooms and where overlooking adjoining amenity spaces as indicated on elevation drawings.

**Roof**  
7 Bulbrose flat concrete roof tiles, fixed to timber battens on vapour permeable roofing underlay, on timber / steel roof structure to a suitable roof pitch manufactured in compliance with EN 490:2005.  
8 Low pitch roofs or canopies to be either Single ply membrane Trolac type membranes or self pressed metal roofing with standing seams.  
9 Rainwater goods, downpipes etc. to be Aluminium Alloy.  
10. Ballustrades to be painted mild steel uprights

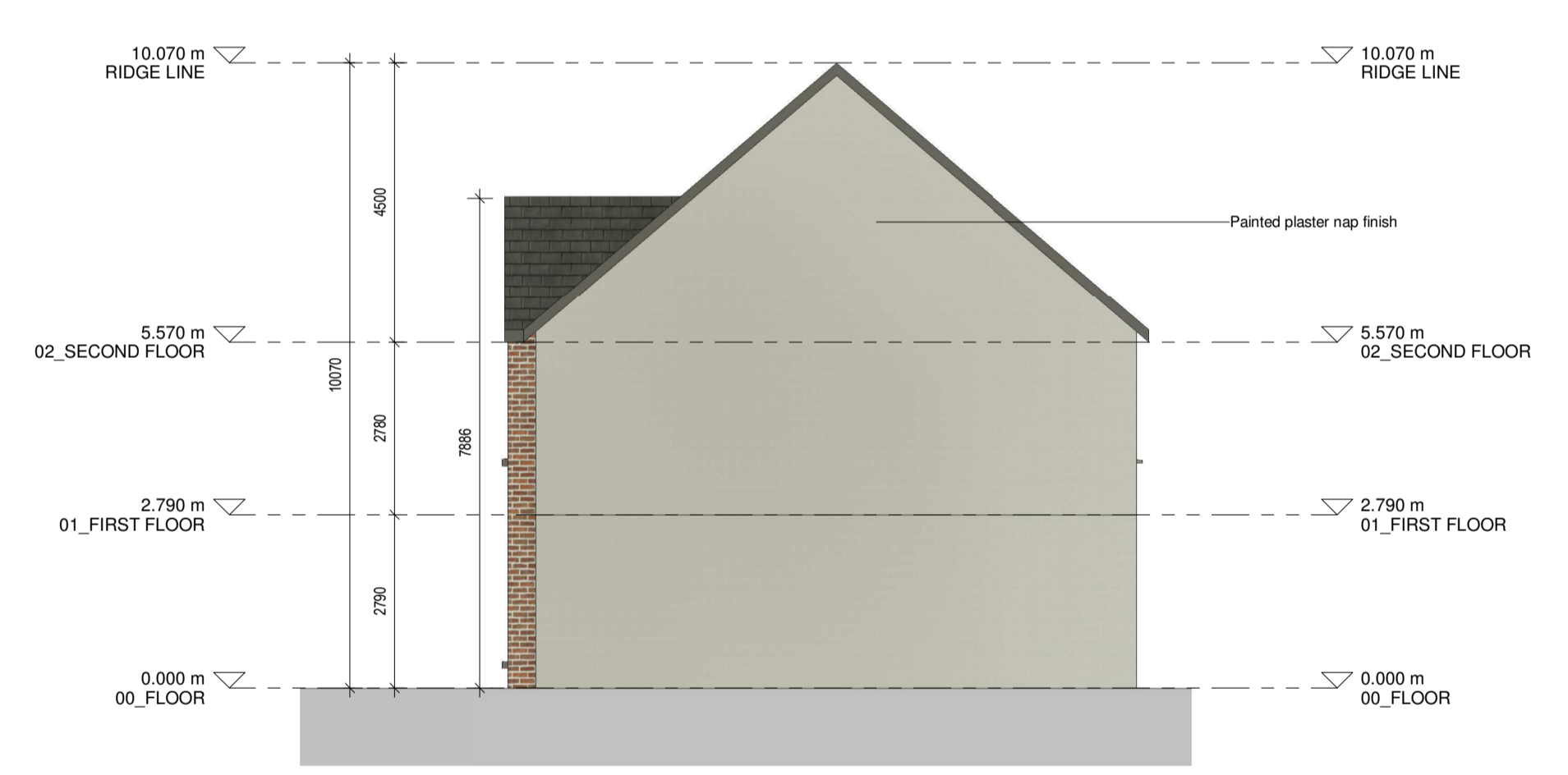
- WT1**  
Wall Type 1 - Selected dark red brick with grey mortar
- WT2**  
Wall Type 2 - Selected black brick with grey mortar
- WT3**  
Wall Type 3 - Selected buff brick with grey mortar
- WT4**  
Wall Type 4 - Random rubble stone cladding
- WT5**  
Wall Type 5 - Painted render nap finish



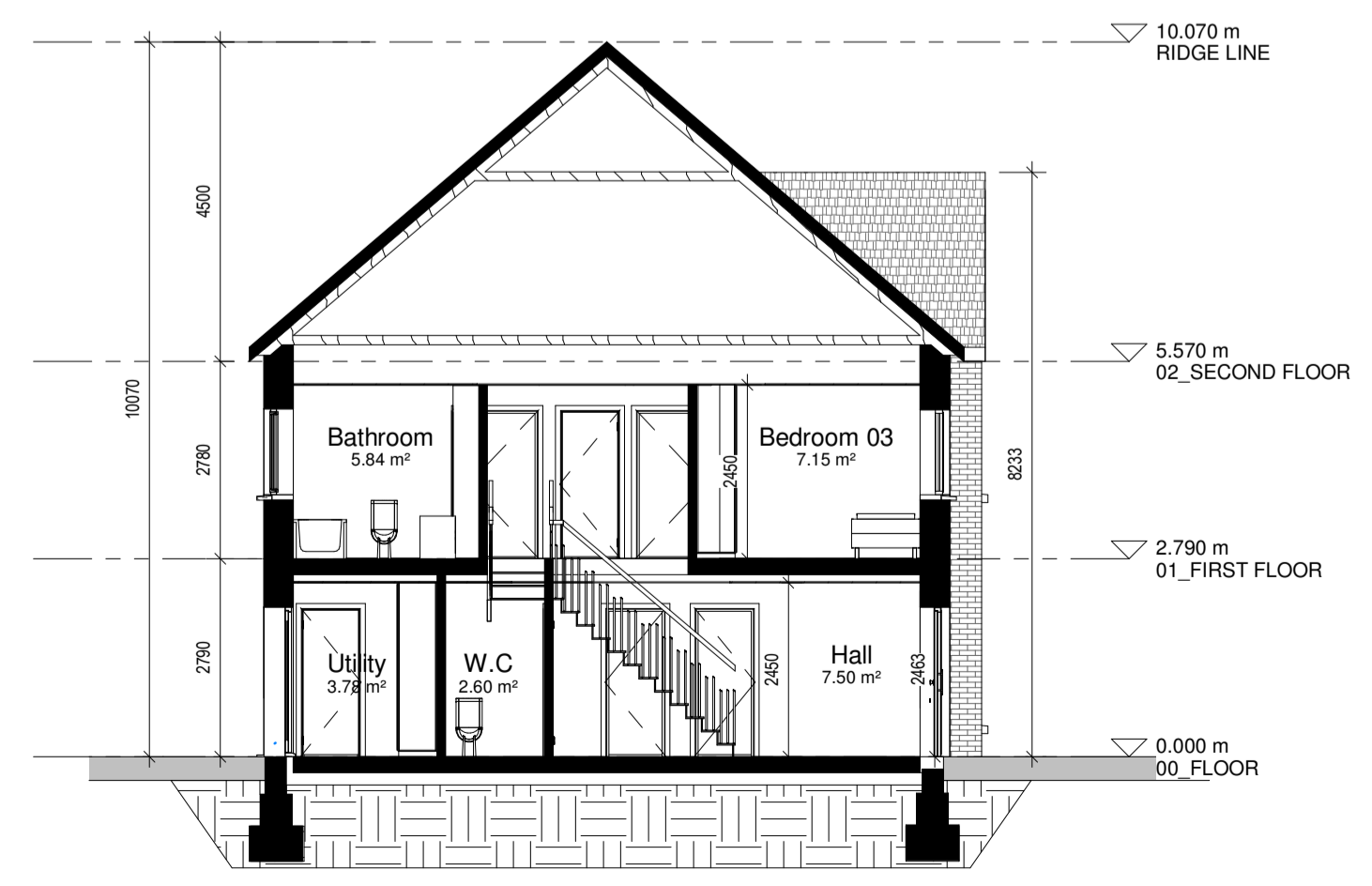
1 FRONT ELEVATION  
1: 100



2 REAR ELEVATION  
1: 100



4 SIDE ELEVATION 1  
1: 100



3 Section 1  
1: 100



Visualisation of semi-detached 3 bed house. ( Not to scale.)

**Notes:**  
- Do not scale from this drawing. Use figured dimensions in all cases.  
- Verify dimensions on site and report any discrepancies to the Architect immediately.  
- This drawing to be read in conjunction with the Architect's Specification.  
- © This drawing is copyright and may only be reproduced with the Architect's permission.  
**Drawing Notes:**  
Refer to windows, doors and curtain walling schedules for more information on details and types. Refer to all other referenced architectural drawings for more information.  
Refer also to all other consultants drawings, specifications, reports and schedules including: Wash Goodfellow for structural and civils, Renaissance for MEP information, JGA for fire strategy information, Ryan & Associates for DAC information, AIT Urbanism & Landscape for landscape plan boundary details & Amplitude Acoustics for Acoustics.

Rev.	Date	Drawn	Issue for Planning	Details of Issue / Revision
A	SEPT 21	A.R.	Issue for Planning	

**Issues & Revisions**

**reddy architecture + urbanism**

Dartry Mills,  
Dartry Road  
Dublin 6,  
D06 Y0E3

T: +353 (0)1 498 7000  
W: www.reddyarchitecture.com  
E: info@reddyarchitecture.com

Client Details:  
**Voyage Property Limited,**  
Ashbourne Hall,  
Dock Road,  
Limerick.

Project Details:  
**Greenpark SHD**  
Limerick

Drawing Title:  
**House Type A - 3 Bed**

Job No.	Sheet Size	Scale @A1:
<b>P20-133D</b>	<b>A1_</b>	<b>1:100</b>
Issue Date:	Drawn By:	Reviewed By:
<b>SEPT 21</b>	<b>A. Roche</b>	<b>M.Brown</b>
Status	Purpose of Issue	
<b>S02</b>	<b>3.0 Planning Application</b>	
Project-Originator-Zone-Level-Type-Role-Classification-Number	Revision	
<b>20133-RAU-ZZ-ZZ-DR-A-02.2000</b>	<b>A</b>	